

TYPE FREEHOLD S.S.A. YES

PURPOSE SUBDIVISION

PLAN OF LOTS 4, 136-4, 140, 4, 147-4, 151, 4, 158-4, 167, 4, 172-4, 192, 4, 195-4, 201, 9439, 9440, ROADS, EASEMENTS AND RESTRICTIVE COVENANT

FORMER TENURE SEE FORMER TENURE TABLE

LOCAL AUTHORITY CITY OF SWAN

LOCALITY CAVERSHAM

D.O.L. FILE

FIELD RECORD 123580

SURVEYOR'S CERTIFICATE - REG 54
Nigel J. SIMPSON
I, Nigel J. SIMPSON
hereby certify that this plan is accurate and is a correct representation of the
(a) survey, and/or
(b) calculations from measurements recorded in the field records,
[* delete if inapplicable]
undertaken for the purposes of this plan and that it complies with the relevant written laws in relation to which it is lodged.

LICENSED SURVEYOR
Nigel J. Simpson
2018.12.19 11:43:19 408'00"
DATE

LOGGED

19.12.2018 DATE
19122018 DATE
19122018 DATE
19122018 DATE

1.S.C. ASSESSED No.

EXAMINED
E. Milewska 28.12.2018 DATE

WESTERN AUSTRALIAN PLANNING COMMISSION
FILE 156213

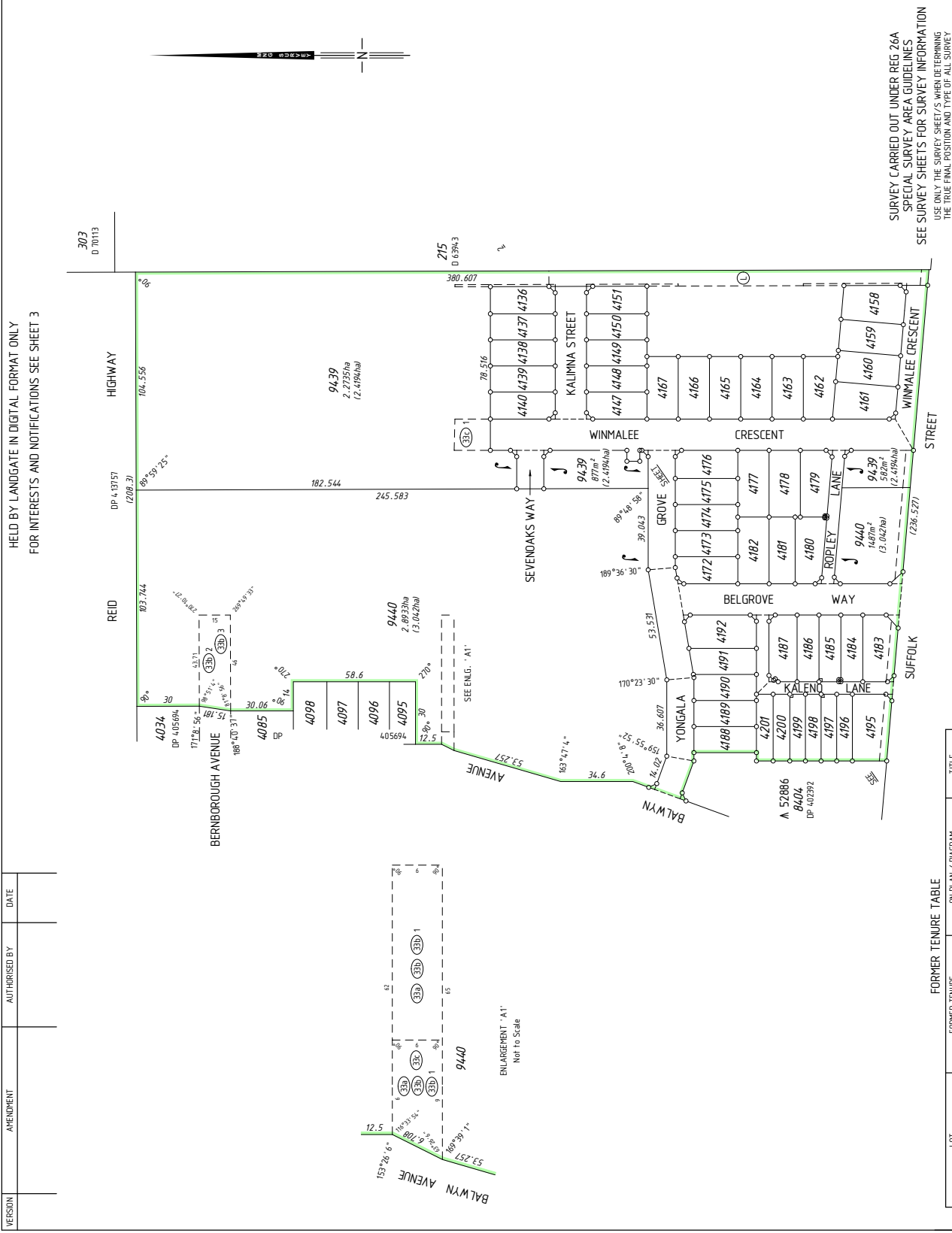
Delegated under S. 16 PRD Act 2005 06-Feb-2019 DATE

SUBJECT TO IN ORDER FOR DEALINGS
SEC 168(1)(2), 167, 165 OF THE PRD ACT
SEC 195 OF THE TLA
SEC 185 OF THE LAA
TWO OWNERS

APPROVED REG26A (4)
6.02.2019 DATE
FOR INSPECTOR OF PLANS AND SURVEYS
INSPECTOR OF PLANS AND SURVEYS
(S. 18) Licensed Surveyors Act 1989)



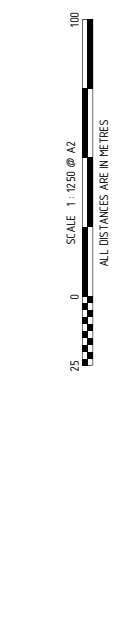
DEPOSITED PLAN
4 12033
SHEET 01 OF 03 SHEETS
PLUS SURVEY SHEETS (S)
VERSION 1



SURVEY CARRIED OUT UNDER REG 26A
SPECIAL SURVEY AREA GUIDELINES
SEE SURVEY SHEETS FOR SURVEY INFORMATION
USE ONLY THE SURVEY SHEETS WHEN DETERMINING
THE FINAL POSITION AND TYPE OF SURVEY
MARKS PLACED PERTAINING TO THIS PLAN.

MCGILLIEN INDIAN GROUP
PO Box 12345, Perth, W.A. 6184
Fax: (08) 9446 1500
Email: indiangroup@indiangroup.com.au

MNG
MNG Ref: 98 1049-0501 - Stage 3 - DPA 2003-050

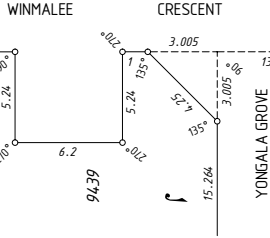


FORMER TENURE TABLE

LOT	FORMER TENURE	ON PLAN / DIAGRAM	TITLE
4, 136-4, 140, 4, 147-4, 151, 4, 158-4, 167, 4, 172-4, 192, 4, 195-4, 201 & 9439	PT LOT 904.5	DP 4.13757	2955-84.5
4, 172-4, 174, 4, 180-4, 192, 4, 195-4, 201 & 9440	PT LOT 904.6	DP 4.13757	2955-84.6
4, 175, 4, 177-4, 179	PT LOT 904.5	DP 4.13757	2955-84.5
	PT LOT 904.6	DP 4.13757	2955-84.6

FOR HEADING SEE SHEET 1
FOR INTERESTS AND NOTIFICATIONS
SEE SHEET 3

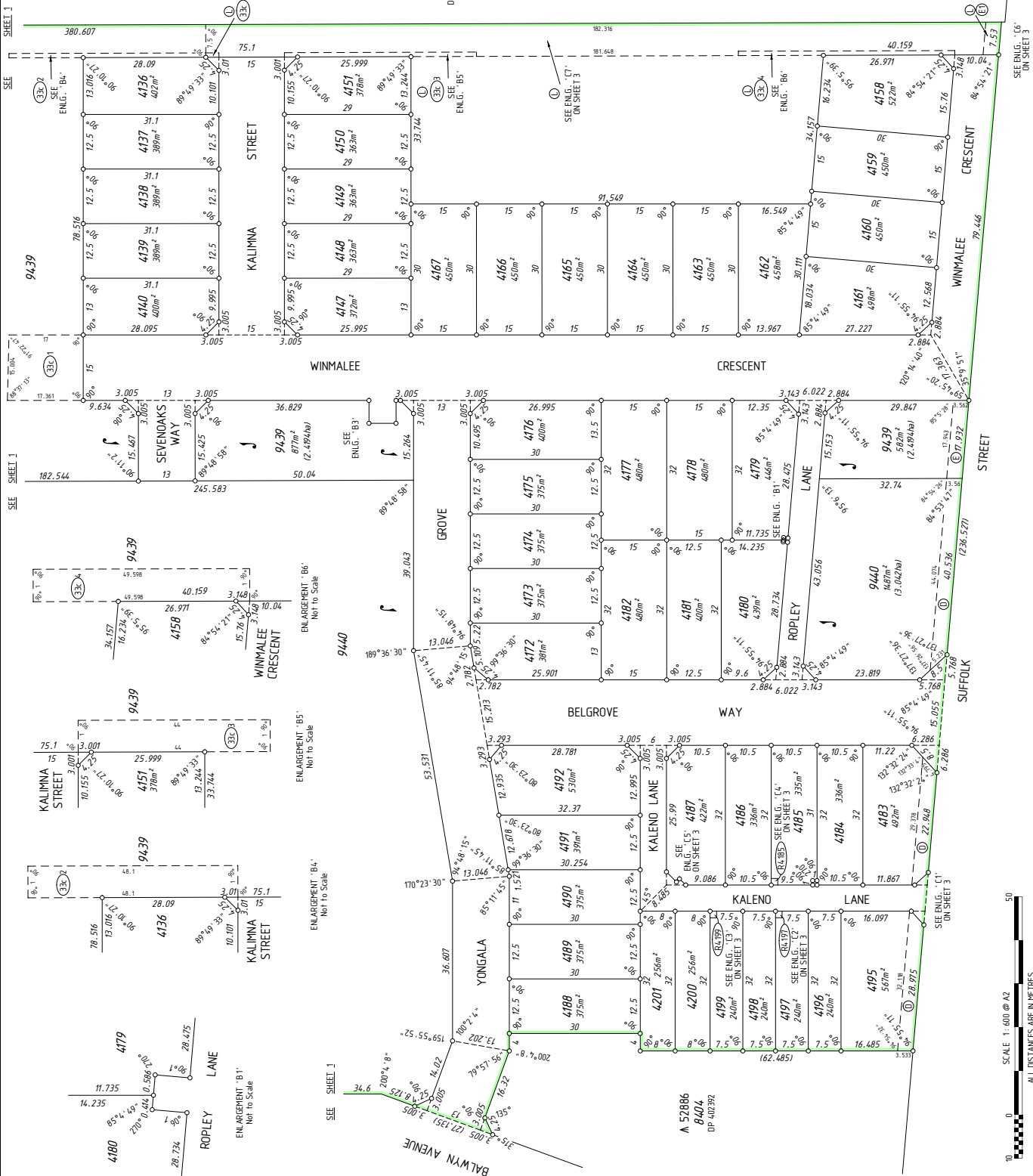
SURVEY CARRIED OUT UNDER REG 26A
SPECIAL SURVEY AREA GUIDELINES
SEE SURVEY SHEETS FOR SURVEY INFORMATION
USE ONLY THE SURVEY SHEETS WHEN DETERMINING
THE TRUE FINAL POSITION AND TYPE OF ALL SURVEY
MARKS PLACED PERTAINING TO THIS PLAN.



MNG Ref: 98183dp-0501 - Stage 3 - DP4,12033, LSD
MAG STRONG
2018, LG181148,28+48007
DATE
LICENSED SURVEYOR



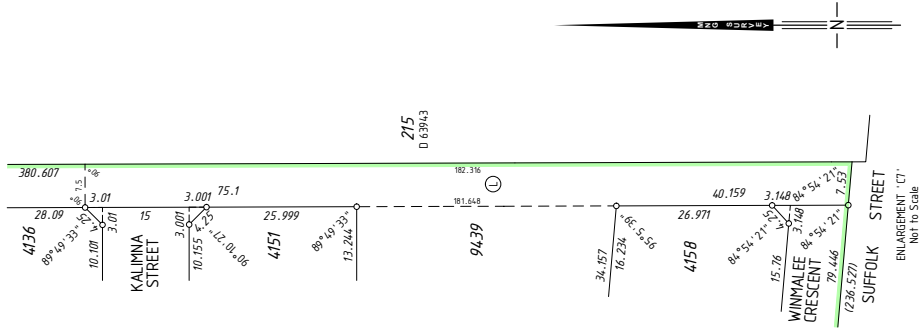
DEPOSITED PLAN
4 12033
SHEET 02 OF 03 SHEETS
VERSION 1



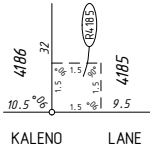
HELD BY LANDGATE IN DIGITAL FORMAT ONLY



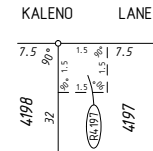
FOR HEADING SEE SHEET 1



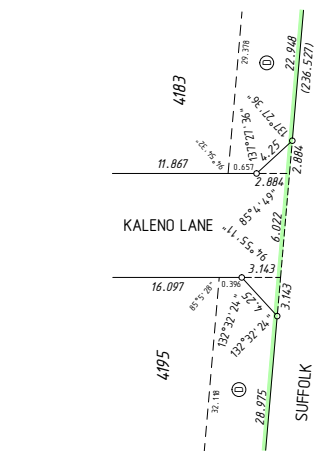
ENLARGEMENT 'C1'
Not to Scale



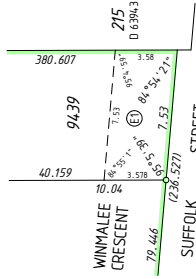
ENLARGEMENT 'C2'
Not to Scale



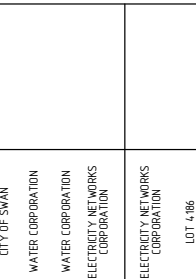
ENLARGEMENT 'C3'
Not to Scale



ENLARGEMENT 'C4'
Not to Scale



ENLARGEMENT 'C5'
Not to Scale



ENLARGEMENT 'C6'
Not to Scale

INTERESTS AND NOTIFICATIONS

SUBJECT	PURPOSE	STATUTORY REFERENCE	ORIGIN	LAND BURDENED	BENEFIT TO	COMMENTS
(D)	EASEMENT (Electricity Supply)	ENERGY OPERATORS (PRIMERS) ACT 1979	DOC M041625	LOTS 4183, 4195 & 9440	ELECTRICITY NETWORKS CORPORATION	
(E), (E)	EASEMENT (Drainage)	ENERGY OPERATORS (PRIMERS) ACT 1979	DOC M041629	LOT 9439	ELECTRICITY NETWORKS CORPORATION	
(31A)	EASEMENT (Water Supply)	SEC 167 OF THE P. & D. ACT REG 33 16A	DP 405694	LOT 9440	CITY OF SWAN	
(31B), (31C), (31D), (31E), (31F), (31G), (31H), (31I), (31J), (31K), (31L), (31M), (31N), (31O), (31P), (31Q), (31R), (31S), (31T), (31U), (31V), (31W), (31X), (31Y), (31Z)	EASEMENT (Electricity Supply)	SEC 167 OF THE P. & D. ACT REG 33 16A	DP 405694	LOT 9440	WATER CORPORATION	
(32)	EASEMENT (Electricity Supply)	SEC 167 OF THE P. & D. ACT REG 33 16A	DP 405694	LOT 9440	WATER CORPORATION	
(33), (34), (35), (36), (37), (38), (39), (40), (41), (42), (43), (44), (45), (46), (47), (48), (49), (50), (51), (52), (53), (54), (55), (56), (57), (58), (59), (60), (61), (62), (63), (64), (65), (66), (67), (68), (69), (70), (71), (72), (73), (74), (75), (76), (77), (78), (79), (80), (81), (82), (83), (84), (85), (86), (87), (88), (89), (90), (91), (92), (93), (94), (95), (96), (97), (98), (99), (100)	EASEMENT (Electricity Supply)	SEC 167 OF THE P. & D. ACT REG 33 16A	THIS PLAN	LOT 9439	ELECTRICITY NETWORKS CORPORATION	
(41), (42), (43), (44), (45), (46), (47), (48), (49), (50), (51), (52), (53), (54), (55), (56), (57), (58), (59), (60), (61), (62), (63), (64), (65), (66), (67), (68), (69), (70), (71), (72), (73), (74), (75), (76), (77), (78), (79), (80), (81), (82), (83), (84), (85), (86), (87), (88), (89), (90), (91), (92), (93), (94), (95), (96), (97), (98), (99), (100)	EASEMENT (Drainage)	SEC 195 OF THE T.L.A.	THIS PLAN	LOT 4185	LOT 4186	
(41), (42), (43), (44), (45), (46), (47), (48), (49), (50), (51), (52), (53), (54), (55), (56), (57), (58), (59), (60), (61), (62), (63), (64), (65), (66), (67), (68), (69), (70), (71), (72), (73), (74), (75), (76), (77), (78), (79), (80), (81), (82), (83), (84), (85), (86), (87), (88), (89), (90), (91), (92), (93), (94), (95), (96), (97), (98), (99), (100)	EASEMENT (Drainage)	SEC 195 OF THE T.L.A.	THIS PLAN	LOT 4197	LOT 4198	
(41), (42), (43), (44), (45), (46), (47), (48), (49), (50), (51), (52), (53), (54), (55), (56), (57), (58), (59), (60), (61), (62), (63), (64), (65), (66), (67), (68), (69), (70), (71), (72), (73), (74), (75), (76), (77), (78), (79), (80), (81), (82), (83), (84), (85), (86), (87), (88), (89), (90), (91), (92), (93), (94), (95), (96), (97), (98), (99), (100)	EASEMENT (Drainage)	SEC 195 OF THE T.L.A.	THIS PLAN	LOT 4199	LOT 4200	
(41), (42), (43), (44), (45), (46), (47), (48), (49), (50), (51), (52), (53), (54), (55), (56), (57), (58), (59), (60), (61), (62), (63), (64), (65), (66), (67), (68), (69), (70), (71), (72), (73), (74), (75), (76), (77), (78), (79), (80), (81), (82), (83), (84), (85), (86), (87), (88), (89), (90), (91), (92), (93), (94), (95), (96), (97), (98), (99), (100)	EASEMENT (Drainage)	SEC 195 OF THE T.L.A.	DOC O 074660	LOT 9439	CITY OF SWAN	
(41), (42), (43), (44), (45), (46), (47), (48), (49), (50), (51), (52), (53), (54), (55), (56), (57), (58), (59), (60), (61), (62), (63), (64), (65), (66), (67), (68), (69), (70), (71), (72), (73), (74), (75), (76), (77), (78), (79), (80), (81), (82), (83), (84), (85), (86), (87), (88), (89), (90), (91), (92), (93), (94), (95), (96), (97), (98), (99), (100)	RESTRICTIVE COVENANT	SEC 136D OF THE T.L.A.	THIS PLAN & DOC O 074656	ALL LOTS EXCEPT 9439 & 9440	ALL LOTS EXCEPT 9439 & 9440	
(41), (42), (43), (44), (45), (46), (47), (48), (49), (50), (51), (52), (53), (54), (55), (56), (57), (58), (59), (60), (61), (62), (63), (64), (65), (66), (67), (68), (69), (70), (71), (72), (73), (74), (75), (76), (77), (78), (79), (80), (81), (82), (83), (84), (85), (86), (87), (88), (89), (90), (91), (92), (93), (94), (95), (96), (97), (98), (99), (100)	NOTIFICATION	SEC 165 OF THE P. & D. ACT	DOC O 074665	ALL LOTS EXCEPT 9439 & 9440	ALL LOTS EXCEPT 9439 & 9440	PROXIMITY TO RURAL ZONED LAND

SURVEY CARRIED OUT UNDER REG 26A
SPECIAL SURVEY AREA GUIDELINES
SEE SURVEY SHEETS FOR SURVEY INFORMATION
USE ONLY THE SURVEY SHEET/S WHEN DETERMINING
THE TRUE FINAL POSITION AND TYPE OF ALL SURVEY
MARKS PLACED PERTAINING TO THIS PLAN.

MNG Ref: 98183dp-050i - Stage 3 - DP4,12033, L5D
Nigel Simpson
2016/12/19 11:43:30+0807
DATE

DEPOSITED PLAN
4 12033
SHEET 03 OF 03 SHEETS
VERSION 1

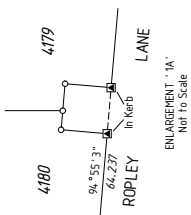
AMENDMENTS TABLE (SURVEY SHEETS ONLY)

VER.	AMENDMENT	AUTHORISED BY	DATE

FOR SURVEY INFORMATION ONLY
 SURVEY INFORMATION COMPRISES
 SURVEY SHEET A.....

SURVEY CARRIED OUT UNDER REG 26A
 SPECIAL SURVEY AREA GUIDELINES
 ALL BEARINGS AND DISTANCES ON THIS SHEET
 ARE THE RESULT OF LEAST SQUARES ADJUSTMENTS
 CARRIED OUT ON FIELD OBSERVATIONS

GRID DATUM IS PIC94

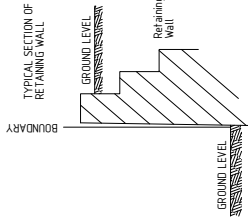


SURVEYOR'S CERTIFICATE - REG 54
 I, Nigel J. SIMPSON
 hereby certify that this plan is accurate and
 is a correct representation of the -
 (a) "Survey, and/or
 (b) "Calculations from measurements
 recorded in the field records.
 (*delete if inapplicable)
 undertaken for the purposes of this plan
 and that it complies with the relevant
 provisions of laws in relation to which it is
 lodged.

SURVEYOR'S CERTIFICATE - REG 55E(d)
 The marks shown on these plans of survey
 were in place on
 17/12/2018

Nigel Simpson
 206 01 14 0832323
 +08007

Nigel
 LICENSED SURVEYOR DATE



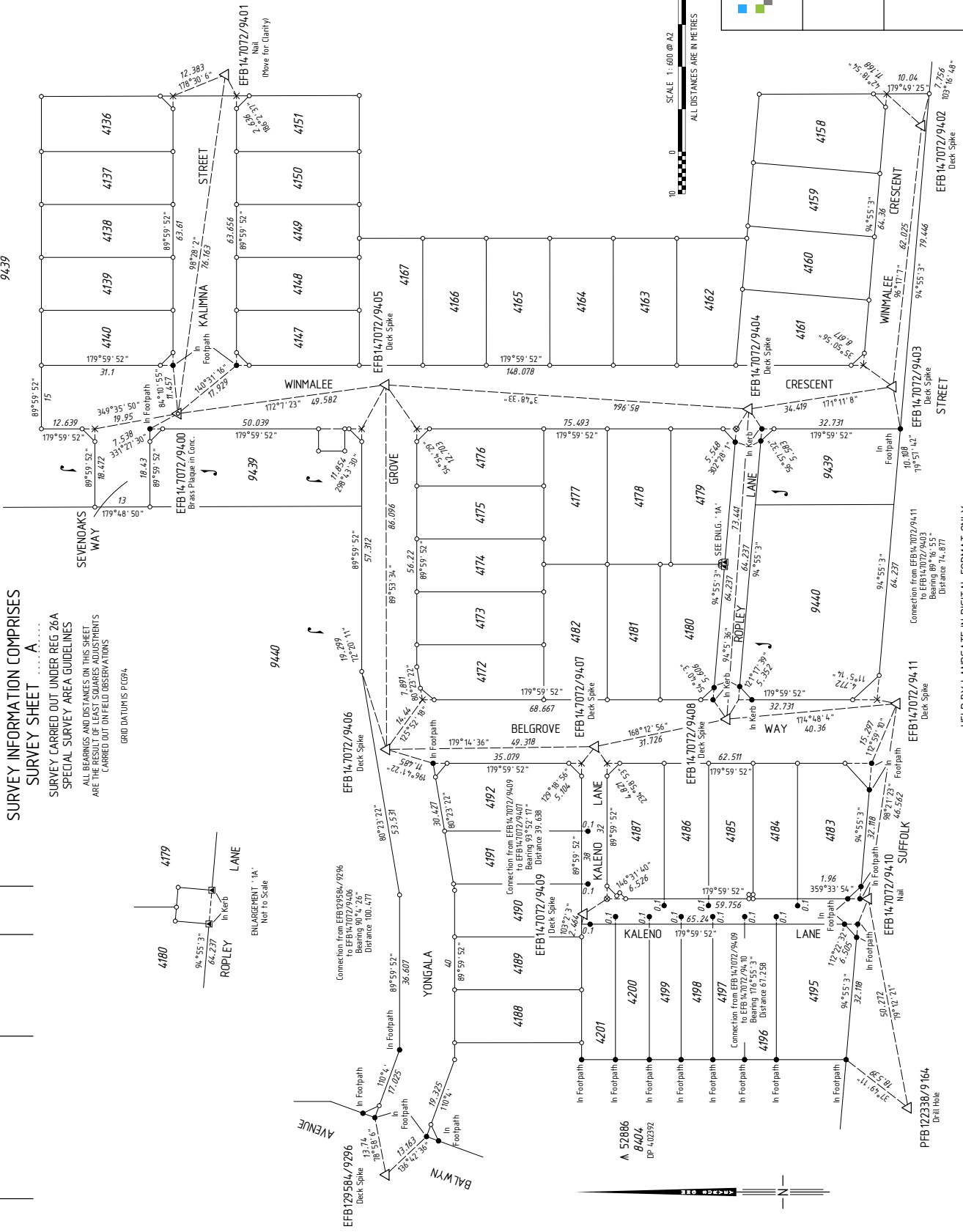
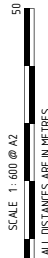
NOT TO SCALE
 THIS SUBDIVISION CONTAINS RETAINING WALLS
 WHICH ARE LOCATED WITHIN THE HIGH LOTS.

LEGEND

- ▲ Standard Survey Mark (SSM)
- △ Permanent Survey Mark (PSM)
- ⊠ Temporary Control Mark (TCM)
- Peg unless stated otherwise
- Nail
- ▲ Nail and Plate
- ⊗ Rivet
- ⊕ Spike
- ⊙ Drill Hole
- ⊗ Deck Spike in Bitumen
- ⊠ Deck Spike and Plate



DEPOSITED PLAN
4 12033
 SURVEY SHEET A
 VERSION 1



HELD BY LANDGATE IN DIGITAL FORMAT ONLY